

What is the Guelph Wellington Local Immigration Partnership?

The Guelph Wellington Local Immigration Partnership (GWLIP) is a large coalition of individuals and organizations working to improve the social and economic inclusion of immigrants in Guelph and Wellington County. We envision a caring and equitable community where everyone can thrive.



For additional data, analysis, and recommendations, please refer to the full 2016 Guelph-Wellington Immigrant Survey Report, available at www.guelphwellingtonlip.ca

Have questions or want to get involved?
Contact us at **519-822-1260 x2565**, info@guelphwellingtonlip.ca

Alternate accessible formats are available upon request in accordance with the Accessibility for Ontarians with Disabilities Act, 2005

Funded by:  Immigration, Refugees and Citizenship Canada
Financé par : Immigration, Réfugiés et Citoyenneté Canada

Executive Summary

2016 Guelph-Wellington Immigrant Survey Report

From July to November 2016, the Guelph Wellington Local Immigration Partnership (GWLIP) conducted research to accomplish two goals.



Better understand the needs and experiences of recent immigrants in Guelph and Wellington.



Produce actionable recommendations to improve the social and economic inclusion of immigrants in Guelph and Wellington.

The research was guided by five questions concerning immigrants in Guelph-Wellington.



Do immigrants have access to resources to meet basic needs?



Do immigrants have access to services and support?



Do immigrants have a sense of belonging and community connection?



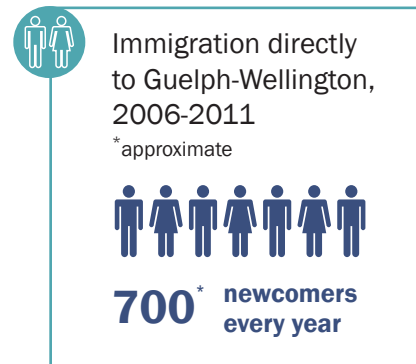
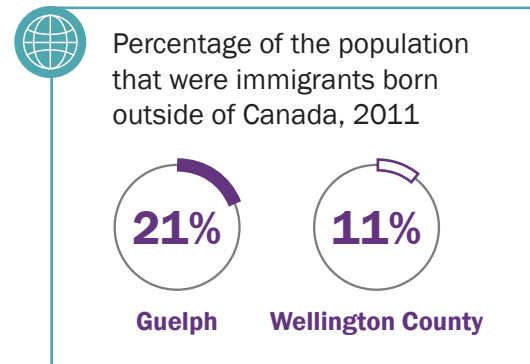
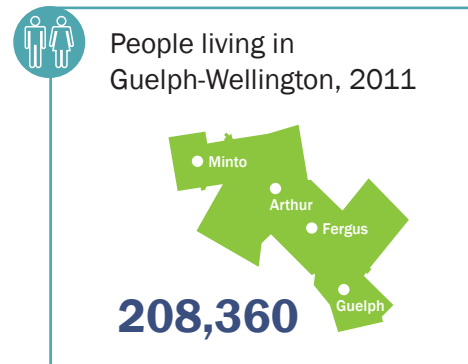
Do immigrants have access to education, training, and skill development?



Do immigrants have access to meaningful employment?

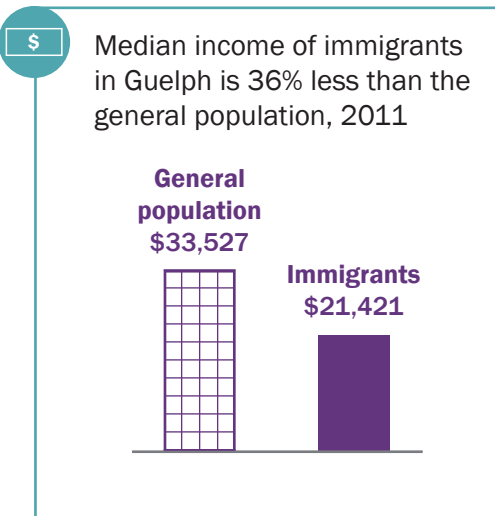
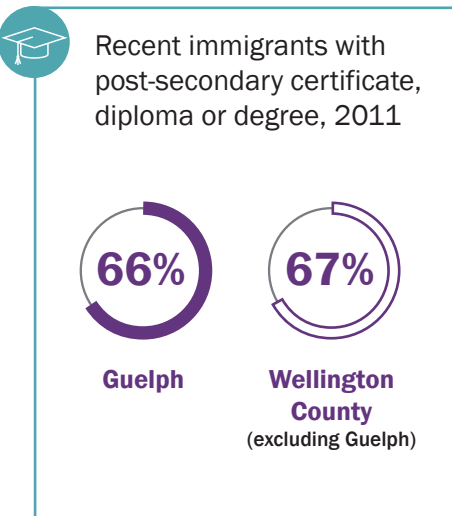
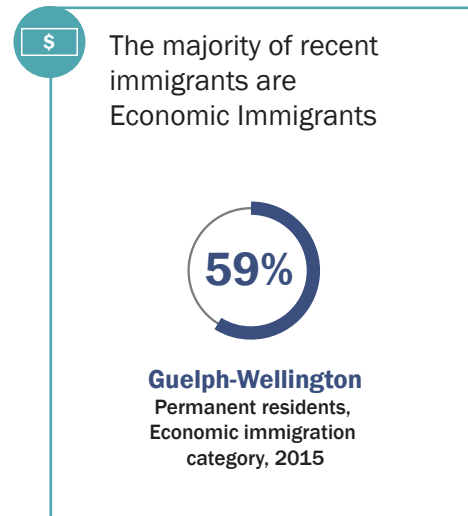
Guelph-Wellington Demographic Profile

The research began with an overview of existing data related to immigration trends.



Canadian Immigration policy screens applicants based on human capital criteria like age, language proficiency, education level and work experience. We would expect that such intensely screened candidates would see incomes which meet or exceed the median of the general population.

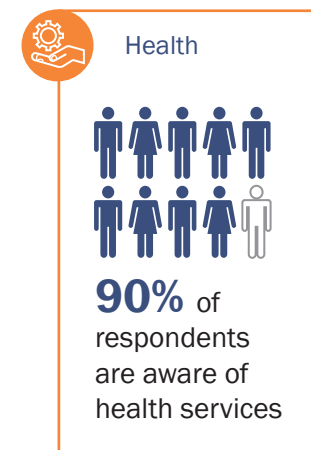
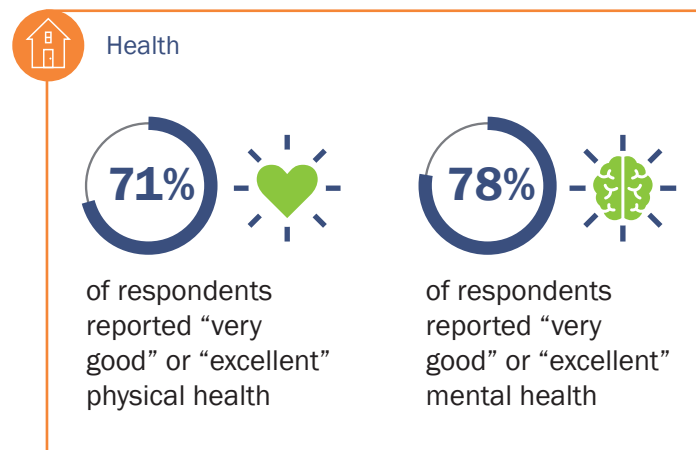
In Guelph, the 36% gap between the median income of immigrants and the general population shows that there is a long way to go on economic parity.



Survey Results: What we Heard

Immigrants living in Guelph-Wellington, who had been in Canada for 10 years or less, were asked about their experiences.

Some of what we learned indicates that things are going well.



Some of what we learned shines a light on opportunities to improve.

