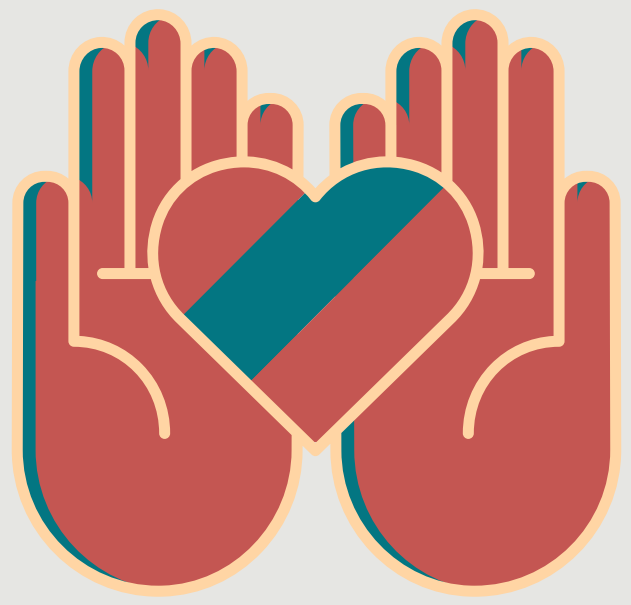


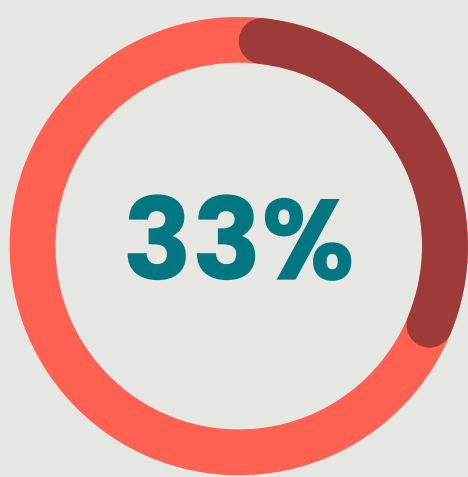
# GUELPH WELLINGTON NEWCOMER MATERNITY EXPERIENCES STUDY

## MAY 2023 | SEE FULL REPORT [HERE](#)

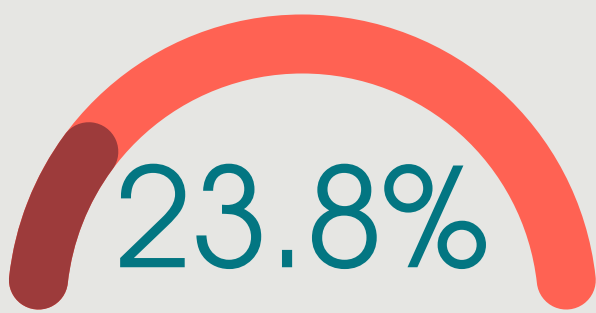
“Culturally Appropriate Care” is aware of differences in heritage, sexual orientation, socioeconomic situation, ethnicity, & cultural background



The Newcomer Maternity Experiences Study aimed to understand the range of experiences and intersectional influences that shape Newcomer women’s maternity experiences in Guelph and Wellington County.

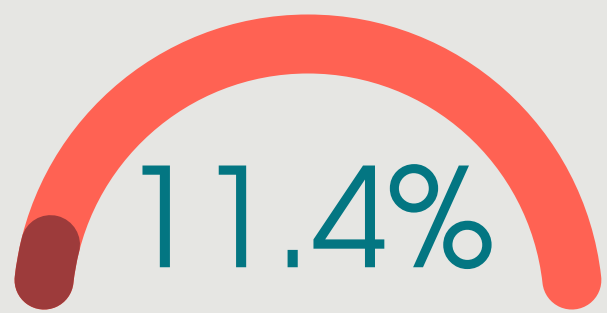


According to Statistics Canada, 31% to 33% of children born in 2017 - 2021 had a mother who was born outside of Canada. The share of births to immigrants reached more than 20% in most provinces.



### GUELPH

In 2021, 33,780 out of 141,840 people were immigrants. Top places of birth among recent immigrants were India, Eritrea, and the Philippines.

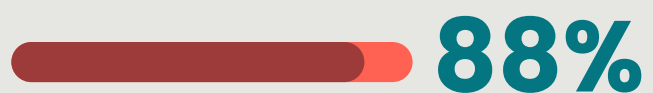


### WELLINGTON COUNTY

10,980 out of 96,245 people were immigrants. Top places of birth among recent immigrants were the United Kingdom, India, and the Philippines

## FINDINGS

**Primary Care Physician**  
referrals through walk-in clinics  
and the Guelph General hospital



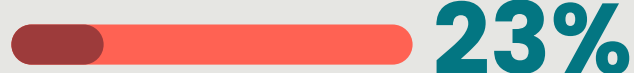
**88%**

**Pre/Postnatal Classes**  
through their community  
center, clinic, or one-on-one  
with a midwife



**77%**

**Postpartum Depression awareness**  
about access to services or  
support



**23%**

**Interpretation Services**  
during appointments or during  
delivery



Service providers use translation & interpretation services often, either one-on-one or over the phone with Immigrant Services Guelph Wellington (ISGW) interpreters.

Newcomer women tended to want a primary care provider in their language resulting in many seeking out the services of a few who speak their language which is difficult to get access to.

Overall, Participants had positive maternity experiences and liked the quality of services provided by their midwives, at the hospital and their community center. Negative experiences related to differences in cultural norms and language barriers.

Best practices include the Guelph Community Health Centre's inclusive programs, the Community Access Midwifery Program, the Pregnancy to Parenting Program and Public Health Nurses programs that provide vitamins and nutritional awareness.

**BARRIERS**

Language	Isolation	Childcare	Financial	Service navigation & awareness
Rural access	Office hours	Practitioners' awareness	Patients' view of care	Incorrect information

**RECOMMENDATIONS**

Culturally appropriate care	Interpretation and translation	Mental health support & awareness	Peer-support groups
Community outreach	Information aggregation	Practitioner awareness training	Program funding